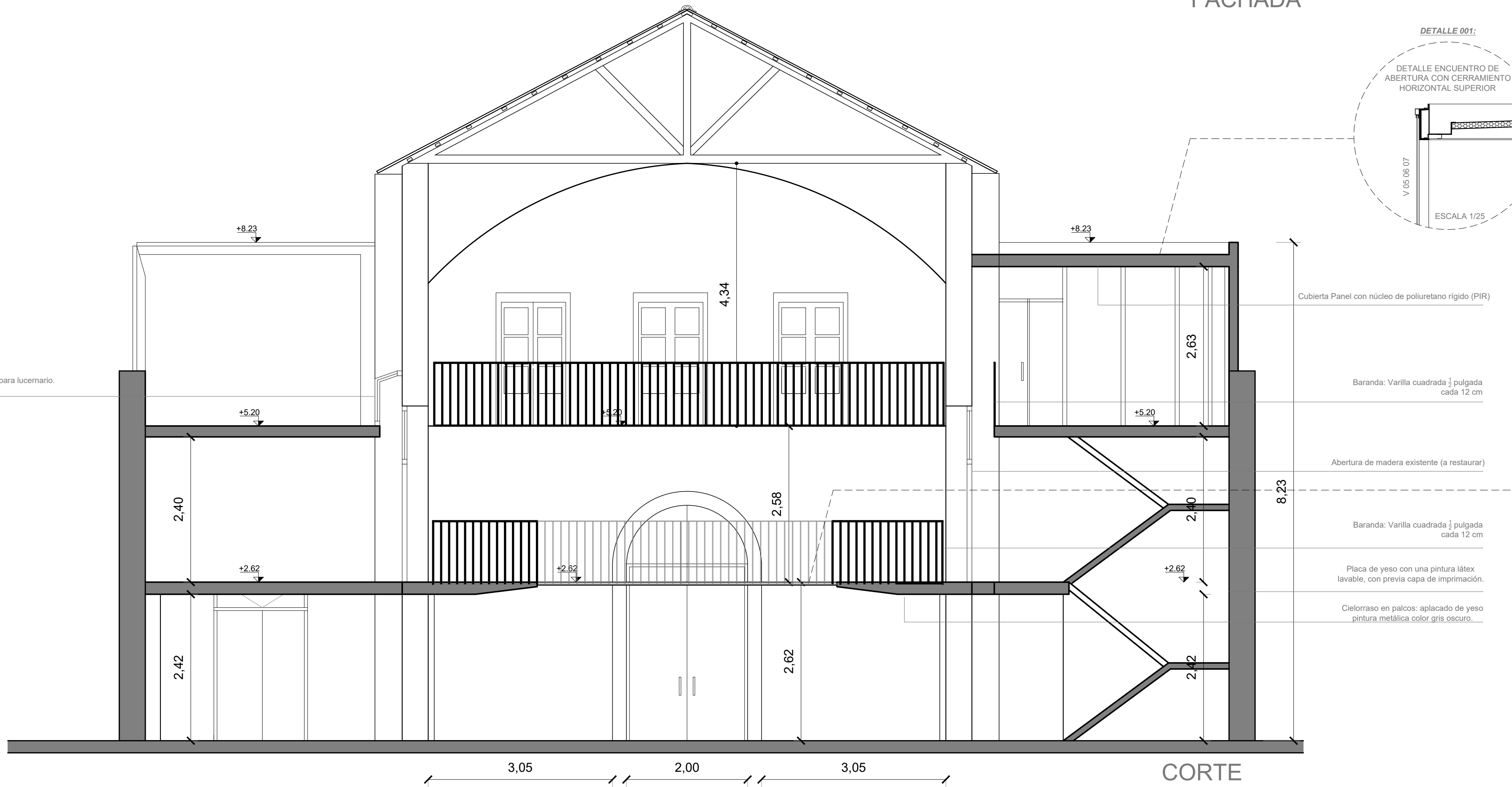
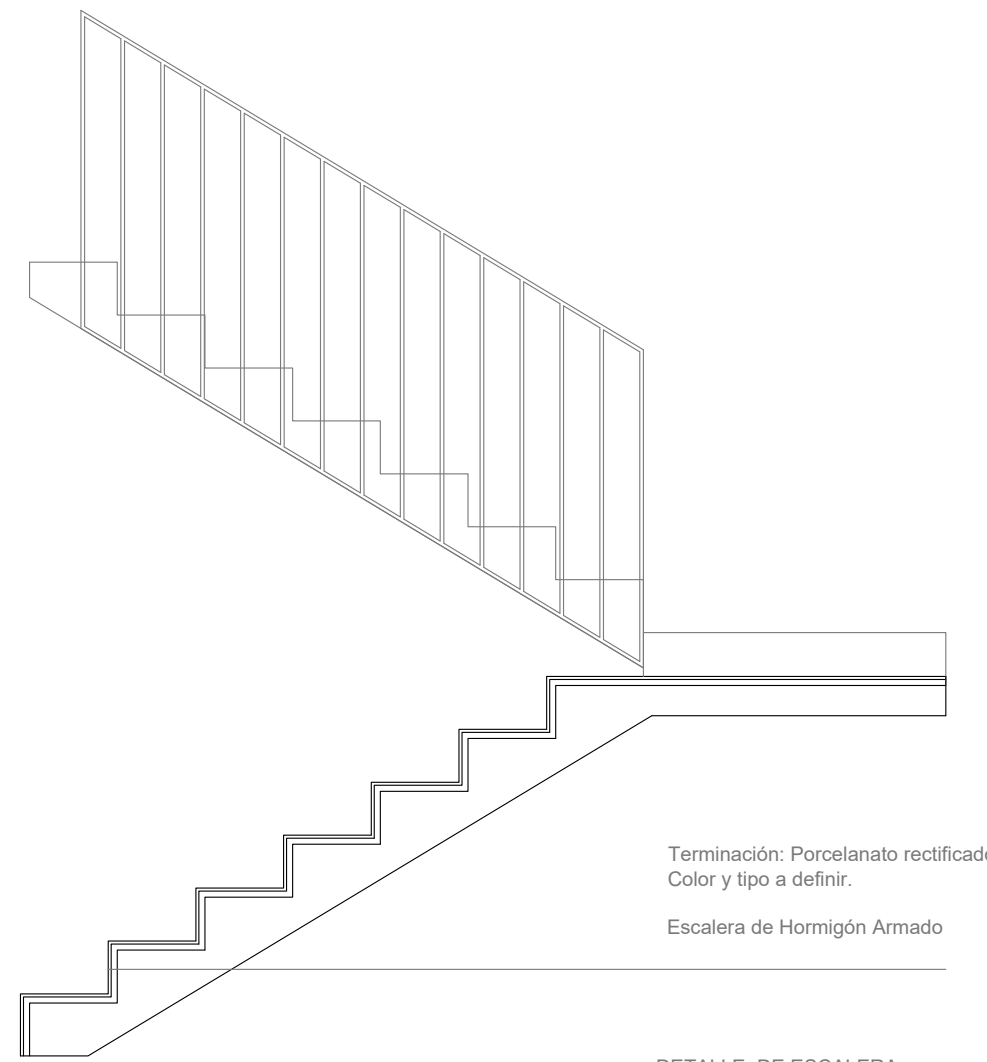


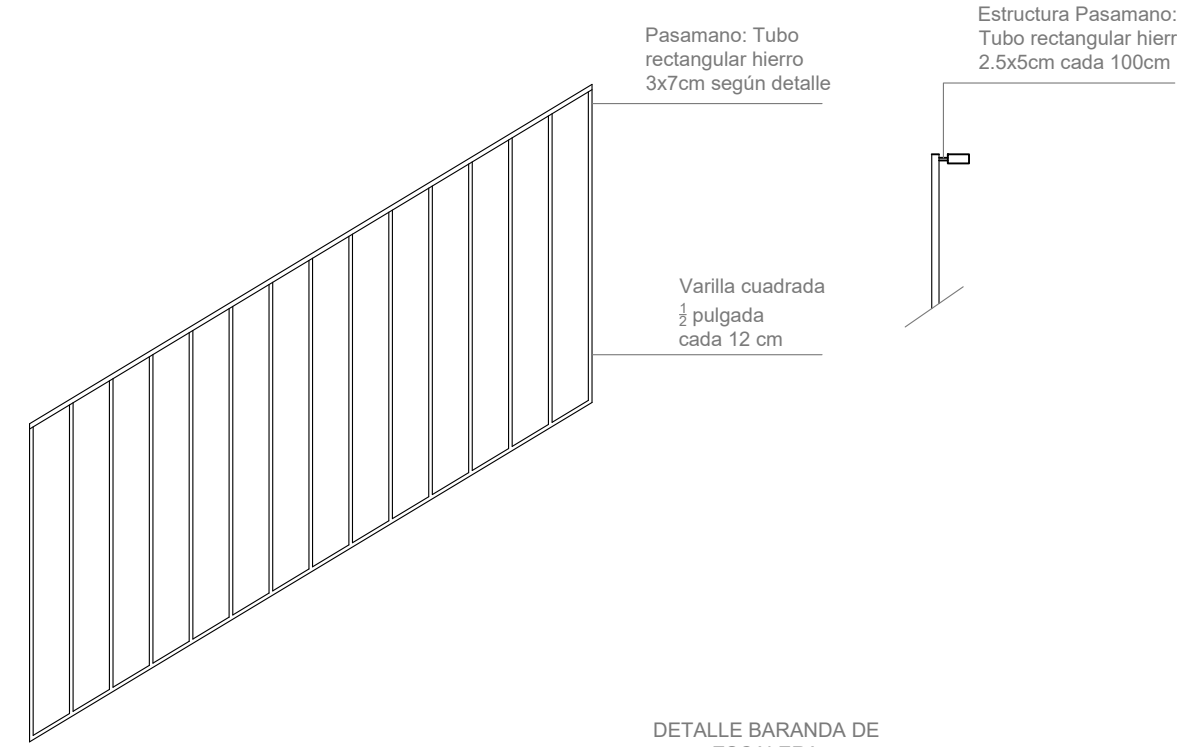
FACHADA



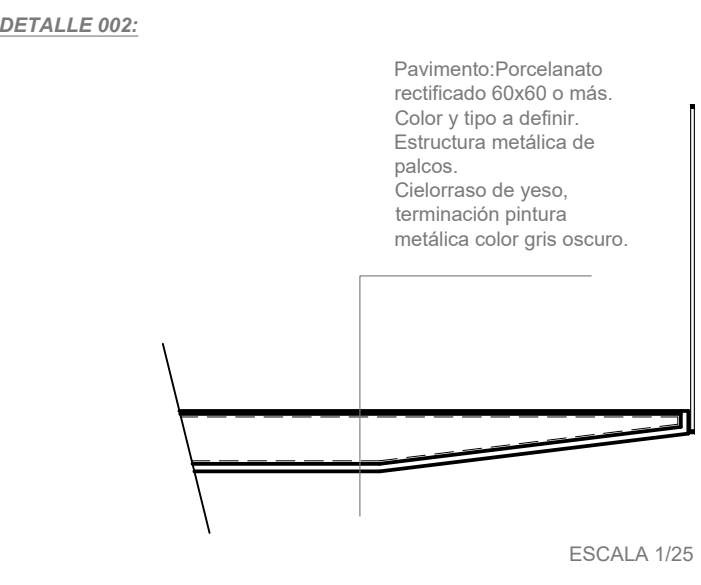
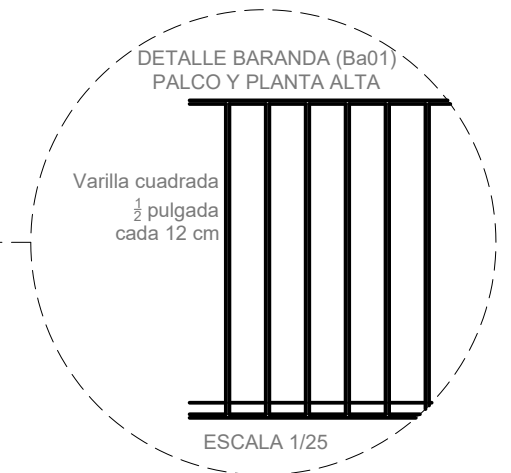
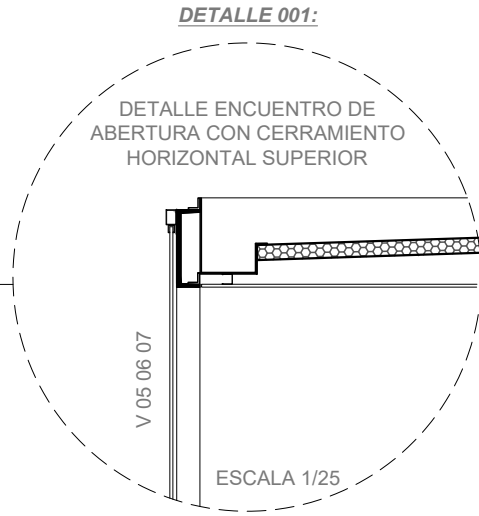
CORTE TRANSVERSAL AA




DETALLE DE ESCALERA
esc: 1/25



DETALLE BARANDA DE ESCALERA
esc: 1/25



Intendencia de Canelones		 Gobierno de Canelones
Proyecto:	TEATRO COLÓN	
Ubicación:	TOMÁS BERRETA 325	
Padrón:	775	
PLANO:	ALBAÑILERÍA FACHADA Y CORTE TRANSVERSAL	
ETAPA: Licitación XX 2022		LAMINA: L08-A03